

WBS NO: 50930.3.3

CONTRACT: DA00604

STATE OF NORTH CAROLINA  
DIVISION OF HIGHWAYS

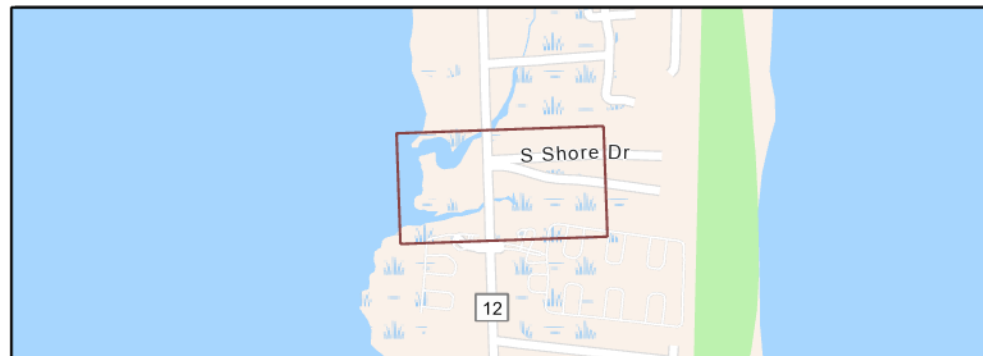
**DARE**

TYPE OF WORK: CONCRETE CURB RAMP IMPROVEMENTS

STATE	STATE PROJECT REFERENCE NUMBER	SHEET NO.
NC	BO-2401A	1
STATE PROJECT NUMBER		DESCRIPTION
50930.3.3		P.E., CONST.

\*SURFACE MOUNTED DETECTABLE WARNINGS SHALL NOT BE PERMITTED ON THIS PROJECT

Ramp ID	Proposed Ramp Type
028-1158	Retrofit Existing Ramp
028-1159	Type 1 Modified
028-1160	Type 1 Modified
028-1161	Retrofit Existing Ramp
028-1162	Retrofit Existing Ramp
028-1163	Retrofit Existing Ramp



Prepared in the Office of:  
**Johnson, Mirmiran and Thompson, Inc.**  
4700 Falls of Neuse Rd, Suite 100, Raleigh, NC, 27609

**B. N. BRASWELL, PE**  
DIV. PROJ. DEVELOPMENT ENGINEER

**M. S. WINSLOW**  
DIV. CONTRACT ENGINEER

**BARRY HOBBS, PE**  
JMT PROJECT MANAGER

**SAVANNA TAYLOR, EI**  
JMT DESIGN ENGINEER



WBS NO: 50930.3.3

CONTRACT: DA00604

STATE OF NORTH CAROLINA  
DIVISION OF HIGHWAYS

**DARE**

*TYPE OF WORK: CONCRETE CURB RAMP IMPROVEMENTS*

\*SURFACE MOUNTED DETECTABLE WARNINGS  
SHALL NOT BE PERMITTED ON THIS PROJECT

STATE	STATE PROJECT REFERENCE NUMBER	SHEET NO.
NC	BO-2401A	2
STATE PROJECT NUMBER		DESCRIPTION
50930.3.3		P.E., CONST.

Ramp ID	Proposed Ramp Type
028-1098	Type 1 Modified
028-1104	Type 1 Modified
028-1105	Type 1 Modified



Prepared in the Office of:  
**Johnson, Mirmiran and Thompson, Inc.**  
4700 Falls of Neuse Rd, Suite 100, Raleigh, NC, 27609

**B. N. BRASWELL, PE**  
DIV. PROJ. DEVELOPMENT ENGINEER

**M. S. WINSLOW**  
DIV. CONTRACT ENGINEER

**BARRY HOBBS, PE**  
JMT PROJECT MANAGER

**SAVANNA TAYLOR, EI**  
JMT DESIGN ENGINEER



WBS NO: 50930.3.3

CONTRACT: DA00604

# STATE OF NORTH CAROLINA DIVISION OF HIGHWAYS

## DARE

*TYPE OF WORK: CONCRETE CURB RAMP IMPROVEMENTS*

\*SURFACE MOUNTED DETECTABLE WARNINGS  
SHALL NOT BE PERMITTED ON THIS PROJECT

STATE	STATE PROJECT REFERENCE NUMBER	SHEET NO.
NC	BO-2401A	3
STATE PROJECT NUMBER		DESCRIPTION
50930.3.3		P.E., CONST.

Ramp ID	Proposed Ramp Type
028-1097	Type 1 Modified
028-1846	Type 1 Modified



Prepared in the Office of:  
**Johnson, Mirmiran and Thompson, Inc.**  
 4700 Falls of Neuse Rd, Suite 100, Raleigh, NC, 27609

**B. N. BRASWELL, PE**  
 DIV. PROJ. DEVELOPMENT ENGINEER

**M. S. WINSLOW**  
 DIV. CONTRACT ENGINEER

**BARRY HOBBS, PE**  
 JMT PROJECT MANAGER

**SAVANNA TAYLOR, EI**  
 JMT DESIGN ENGINEER



WBS NO: 50930.3.3

CONTRACT: DA00604

STATE OF NORTH CAROLINA  
DIVISION OF HIGHWAYS

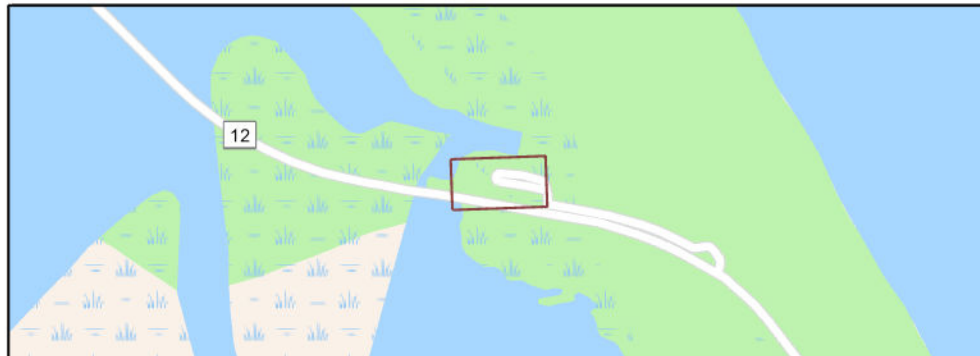
**DARE**

TYPE OF WORK: CONCRETE CURB RAMP IMPROVEMENTS

\*SURFACE MOUNTED DETECTABLE WARNINGS  
SHALL NOT BE PERMITTED ON THIS PROJECT

STATE	STATE PROJECT REFERENCE NUMBER	SHEET NO.
NC	BO-2401A	4
STATE PROJECT NUMBER		DESCRIPTION
50930.3.3		P.E., CONST.

Ramp ID	Proposed Ramp Type
028-1867	Retrofit Existing Ramp



Prepared in the Office of:  
**Johnson, Mirmiran and Thompson, Inc.**  
 4700 Falls of Neuse Rd, Suite 100, Raleigh, NC, 27609

**B. N. BRASWELL, PE**  
 DIV. PROJ. DEVELOPMENT ENGINEER

**M. S. WINSLOW**  
 DIV. CONTRACT ENGINEER

**BARRY HOBBS, PE**  
 JMT PROJECT MANAGER

**SAVANNA TAYLOR, EI**  
 JMT DESIGN ENGINEER



WBS NO: 50930.3.3

CONTRACT: DA00604

STATE OF NORTH CAROLINA  
DIVISION OF HIGHWAYS

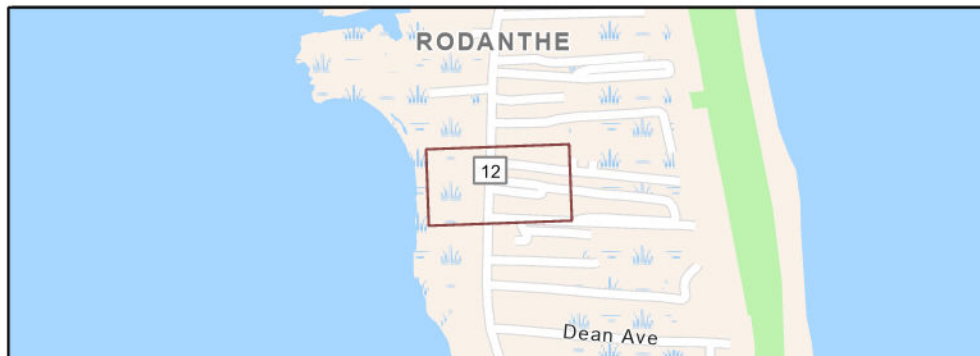
**DARE**

TYPE OF WORK: CONCRETE CURB RAMP IMPROVEMENTS

STATE	STATE PROJECT REFERENCE NUMBER	SHEET NO.
NC	BO-2401A	5
STATE PROJECT NUMBER		DESCRIPTION
50930.3.3		P.E., CONST.

\*SURFACE MOUNTED DETECTABLE WARNINGS SHALL NOT BE PERMITTED ON THIS PROJECT

Ramp ID	Proposed Ramp Type
028-1188	Retrofit Existing Ramp
028-1189	Retrofit Existing Ramp
028-1190	Retrofit Existing Ramp
028-1191	Retrofit Existing Ramp
028-1192	Retrofit Existing Ramp
028-1193	Retrofit Existing Ramp



Prepared in the Office of:  
**Johnson, Mirmiran and Thompson, Inc.**  
4700 Falls of Neuse Rd, Suite 100, Raleigh, NC, 27609

**B. N. BRASWELL, PE**  
DIV. PROJ. DEVELOPMENT ENGINEER

**M. S. WINSLOW**  
DIV. CONTRACT ENGINEER

**BARRY HOBBS, PE**  
JMT PROJECT MANAGER

**SAVANNA TAYLOR, EI**  
JMT DESIGN ENGINEER



WBS NO: 50930.3.3

CONTRACT: DA00604

STATE OF NORTH CAROLINA  
DIVISION OF HIGHWAYS

**DARE**

*TYPE OF WORK: CONCRETE CURB RAMP IMPROVEMENTS*

\*SURFACE MOUNTED DETECTABLE WARNINGS  
SHALL NOT BE PERMITTED ON THIS PROJECT

STATE	STATE PROJECT REFERENCE NUMBER	SHEET NO.
NC	BO-2401A	6
STATE PROJECT NUMBER		DESCRIPTION
50930.3.3		P.E., CONST.

Ramp ID	Proposed Ramp Type
028-1176	Retrofit Existing Ramp
028-1177	Retrofit Existing Ramp
028-1179	Type 1 Modified
028-1180	Retrofit Existing Ramp
028-1181	Type 1 Modified
028-1182	Retrofit Existing Ramp
028-1183	Retrofit Existing Ramp
028-1184	Retrofit Existing Ramp
028-1185	Retrofit Existing Ramp
028-1186	Retrofit Existing Ramp
028-1187	Retrofit Existing Ramp
028-1716	Retrofit Existing Ramp



Prepared in the Office of:  
**Johnson, Mirmiran and Thompson, Inc.**  
4700 Falls of Neuse Rd, Suite 100, Raleigh, NC, 27609

**B. N. BRASWELL, PE**  
DIV. PROJ. DEVELOPMENT ENGINEER

**M. S. WINSLOW**  
DIV. CONTRACT ENGINEER

**BARRY HOBBS, PE**  
JMT PROJECT MANAGER

**SAVANNA TAYLOR, EI**  
JMT DESIGN ENGINEER



WBS NO: 50930.3.3

CONTRACT: DA00604

STATE OF NORTH CAROLINA  
DIVISION OF HIGHWAYS

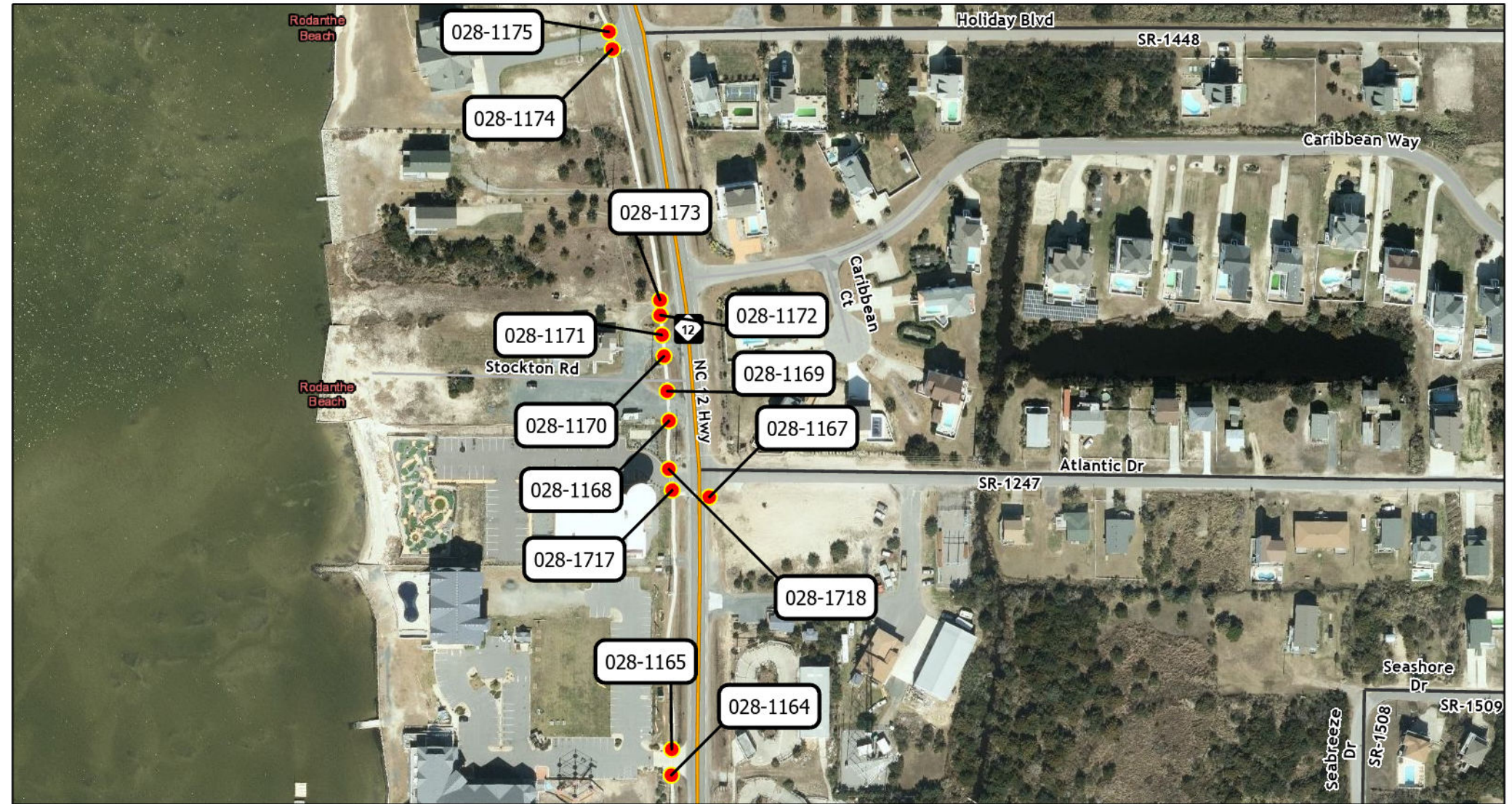
**DARE**

TYPE OF WORK: CONCRETE CURB RAMP IMPROVEMENTS

STATE	STATE PROJECT REFERENCE NUMBER	SHEET NO.
NC	BO-2401A	7
STATE PROJECT NUMBER		DESCRIPTION
50930.3.3		P.E., CONST.

\*SURFACE MOUNTED DETECTABLE WARNINGS SHALL NOT BE PERMITTED ON THIS PROJECT

Ramp ID	Proposed Ramp Type
028-1164	Type 1 Modified
028-1165	Type 1 Modified
028-1167	Type 1 Modified
028-1168	Retrofit Existing Ramp
028-1169	Retrofit Existing Ramp
028-1170	Retrofit Existing Ramp
028-1171	Retrofit Existing Ramp
028-1172	Retrofit Existing Ramp
028-1173	Retrofit Existing Ramp
028-1174	Type 1 Modified
028-1175	Type 1 Modified
028-1717	Retrofit Existing Ramp
028-1718	Retrofit Existing Ramp



Prepared in the Office of:  
**Johnson, Mirmiran and Thompson, Inc.**  
4700 Falls of Neuse Rd, Suite 100, Raleigh, NC, 27609

**B. N. BRASWELL, PE**  
DIV. PROJ. DEVELOPMENT ENGINEER

**M. S. WINSLOW**  
DIV. CONTRACT ENGINEER

**BARRY HOBBS, PE**  
JMT PROJECT MANAGER

**SAVANNA TAYLOR, EI**  
JMT DESIGN ENGINEER



WBS NO: 50930.3.3

CONTRACT: DA00604

STATE OF NORTH CAROLINA  
DIVISION OF HIGHWAYS

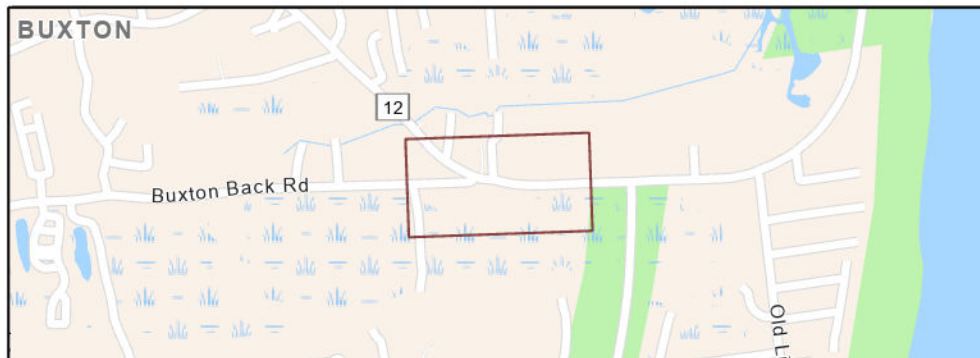
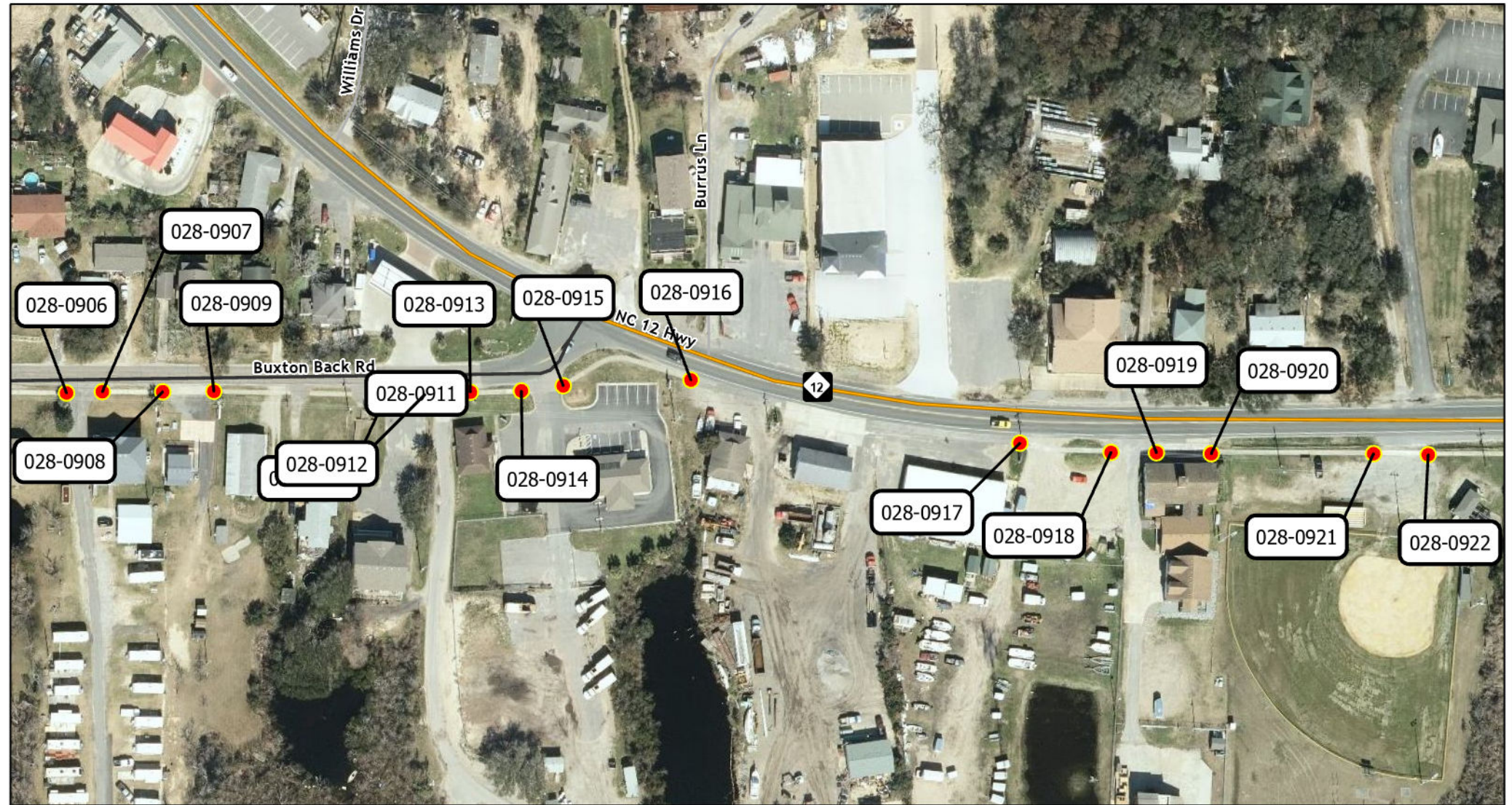
**DARE**

TYPE OF WORK: CONCRETE CURB RAMP IMPROVEMENTS

STATE	STATE PROJECT REFERENCE NUMBER	SHEET NO.
NC	BO-2401A	8
STATE PROJECT NUMBER		DESCRIPTION
50930.3.3		P.E., CONST.

\*SURFACE MOUNTED DETECTABLE WARNINGS SHALL NOT BE PERMITTED ON THIS PROJECT

Ramp ID	Proposed Ramp Type
028-0906	Retrofit Existing Ramp
028-0907	Retrofit Existing Ramp
028-0908	Retrofit Existing Ramp
028-0909	Retrofit Existing Ramp
028-0910	Retrofit Existing Ramp
028-0911	Retrofit Existing Ramp
028-0912	Retrofit Existing Ramp
028-0913	Retrofit Existing Ramp
028-0914	Retrofit Existing Ramp
028-0915	Retrofit Existing Ramp
028-0916	Type 1 Modified
028-0917	Type 1 Modified
028-0918	Retrofit Existing Ramp
028-0919	Retrofit Existing Ramp
028-0920	Retrofit Existing Ramp
028-0921	Retrofit Existing Ramp
028-0922	Retrofit Existing Ramp



Prepared in the Office of:  
**Johnson, Mirmiran and Thompson, Inc.**  
4700 Falls of Neuse Rd, Suite 100, Raleigh, NC, 27609

**B. N. BRASWELL, PE**  
DIV. PROJ. DEVELOPMENT ENGINEER

**M. S. WINSLOW**  
DIV. CONTRACT ENGINEER

**BARRY HOBBS, PE**  
JMT PROJECT MANAGER

**SAVANNA TAYLOR, EI**  
JMT DESIGN ENGINEER





WBS NO: 50930.3.3

CONTRACT: DA00604

STATE OF NORTH CAROLINA  
DIVISION OF HIGHWAYS

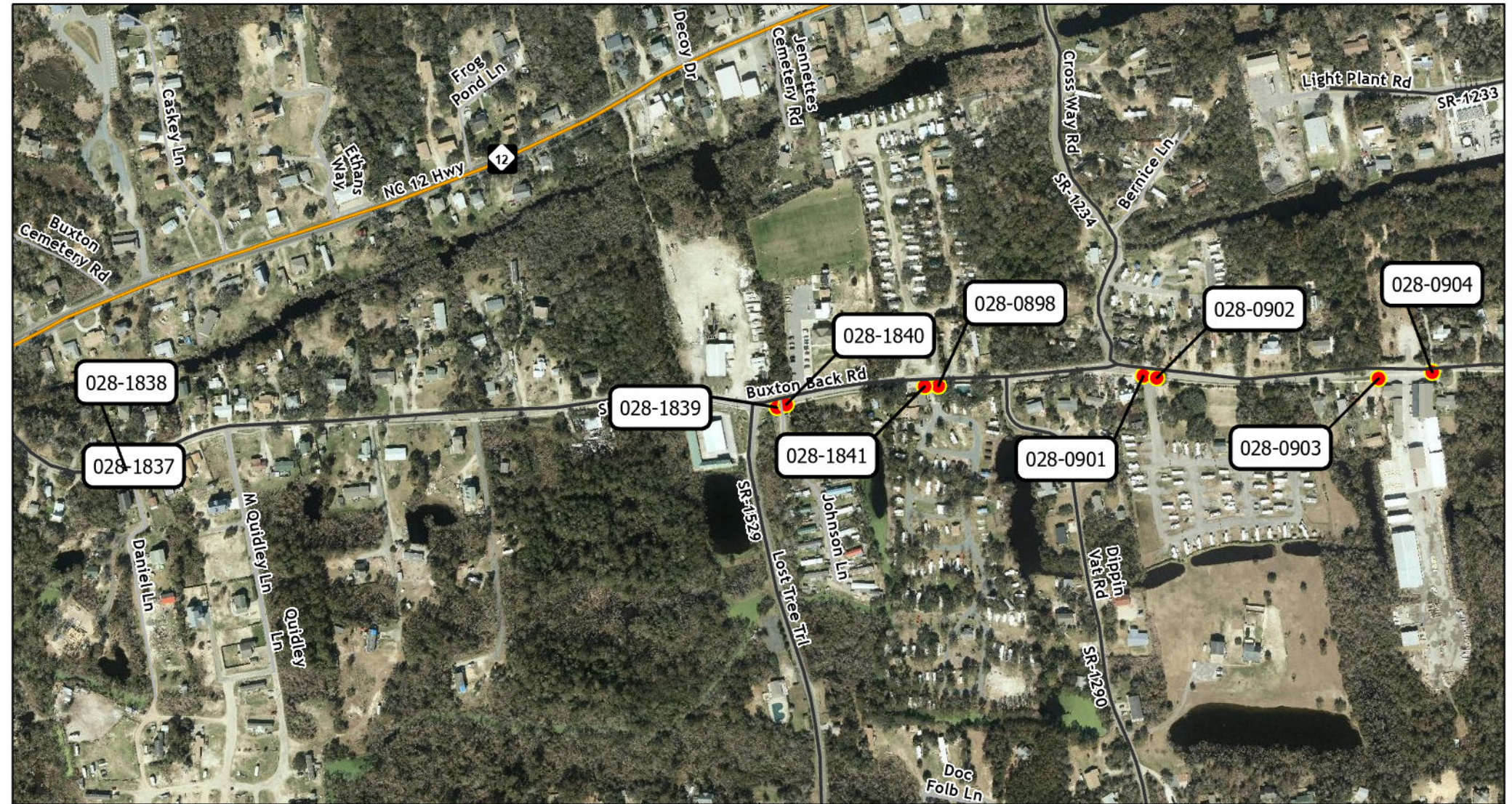
**DARE**

TYPE OF WORK: CONCRETE CURB RAMP IMPROVEMENTS

\*SURFACE MOUNTED DETECTABLE WARNINGS SHALL NOT BE PERMITTED ON THIS PROJECT

STATE	STATE PROJECT REFERENCE NUMBER	SHEET NO.
NC	BO-2401A	9
STATE PROJECT NUMBER		DESCRIPTION
50930.3.3		P.E., CONST.

Ramp ID	Proposed Ramp Type
028-0898	Type 1 Modified
028-0901	Retrofit Existing Ramp
028-0902	Retrofit Existing Ramp
028-0903	Type 1 Modified
028-0904	Type 1 Modified
028-1837	Retrofit Existing Ramp
028-1838	Type 1 Modified
028-1839	Retrofit Existing Ramp
028-1840	Retrofit Existing Ramp
028-1841	Retrofit Existing Ramp



Prepared in the Office of:  
**Johnson, Mirmiran and Thompson, Inc.**  
4700 Falls of Neuse Rd, Suite 100, Raleigh, NC, 27609

**B. N. BRASWELL, PE**  
DIV. PROJ. DEVELOPMENT ENGINEER

**M. S. WINSLOW**  
DIV. CONTRACT ENGINEER

**BARRY HOBBS, PE**  
JMT PROJECT MANAGER

**SAVANNA TAYLOR, EI**  
JMT DESIGN ENGINEER



WBS NO: 50930.3.3

CONTRACT: DA00604

STATE OF NORTH CAROLINA  
DIVISION OF HIGHWAYS

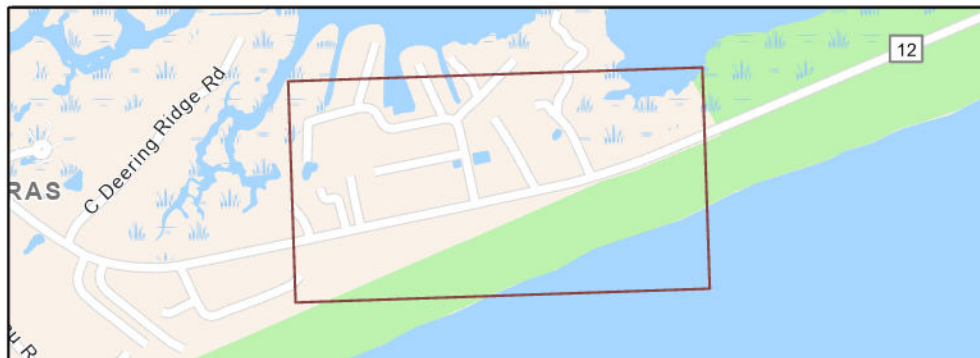
**DARE**

TYPE OF WORK: CONCRETE CURB RAMP IMPROVEMENTS

\*SURFACE MOUNTED DETECTABLE WARNINGS SHALL NOT BE PERMITTED ON THIS PROJECT

STATE	STATE PROJECT REFERENCE NUMBER	SHEET NO.
NC	BO-2401A	10
STATE PROJECT NUMBER		DESCRIPTION
50930.3.3		P.E., CONST.

Ramp ID	Proposed Ramp Type
028-1792	Retrofit Existing Ramp
028-1793	Retrofit Existing Ramp
028-1794	Retrofit Existing Ramp
028-1795	Retrofit Existing Ramp
028-1796	Retrofit Existing Ramp
028-1797	Retrofit Existing Ramp
028-1798	Type 1 Modified
028-1799	Type 1 Modified
028-1801	Type 1 Modified
028-1802	Type 1 Modified
028-1803	Retrofit Existing Ramp
028-1804	Type 1 Modified
028-1805	Retrofit Existing Ramp
028-1806	Type 1 Modified
028-1807	Retrofit Existing Ramp
028-1808	Retrofit Existing Ramp
028-1809	Retrofit Existing Ramp
028-1810	Retrofit Existing Ramp



Prepared in the Office of:  
**Johnson, Mirmiran and Thompson, Inc.**  
4700 Falls of Neuse Rd, Suite 100, Raleigh, NC, 27609

**B. N. BRASWELL, PE**  
DIV. PROJ. DEVELOPMENT ENGINEER

**M. S. WINSLOW**  
DIV. CONTRACT ENGINEER

**BARRY HOBBS, PE**  
JMT PROJECT MANAGER

**SAVANNA TAYLOR, EI**  
JMT DESIGN ENGINEER



WBS NO: 50930.3.3

CONTRACT: DA00604

STATE OF NORTH CAROLINA  
DIVISION OF HIGHWAYS

**DARE**

TYPE OF WORK: CONCRETE CURB RAMP IMPROVEMENTS

\*SURFACE MOUNTED DETECTABLE WARNINGS  
SHALL NOT BE PERMITTED ON THIS PROJECT

STATE	STATE PROJECT REFERENCE NUMBER	SHEET NO.
NC	BO-2401A	11
STATE PROJECT NUMBER		DESCRIPTION
50930.3.3		P.E., CONST.

Ramp ID	Proposed Ramp Type
028-1782	Retrofit Existing Ramp
028-1783	Type 1 Modified
028-1784	Type 1 Modified
028-1785	Retrofit Existing Ramp
028-1786	Retrofit Existing Ramp
028-1787	Type 1 Modified
028-1788	Type 1 Modified
028-1789	Type 1 Modified
028-1790	Retrofit Existing Ramp
028-1791	Retrofit Existing Ramp



Prepared in the Office of:  
**Johnson, Mirmiran and Thompson, Inc.**  
4700 Falls of Neuse Rd, Suite 100, Raleigh, NC, 27609

**B. N. BRASWELL, PE**  
DIV. PROJ. DEVELOPMENT ENGINEER

**M. S. WINSLOW**  
DIV. CONTRACT ENGINEER

**BARRY HOBBS, PE**  
JMT PROJECT MANAGER

**SAVANNA TAYLOR, EI**  
JMT DESIGN ENGINEER



WBS NO: 50930.3.3

CONTRACT: DA00604

STATE OF NORTH CAROLINA  
DIVISION OF HIGHWAYS

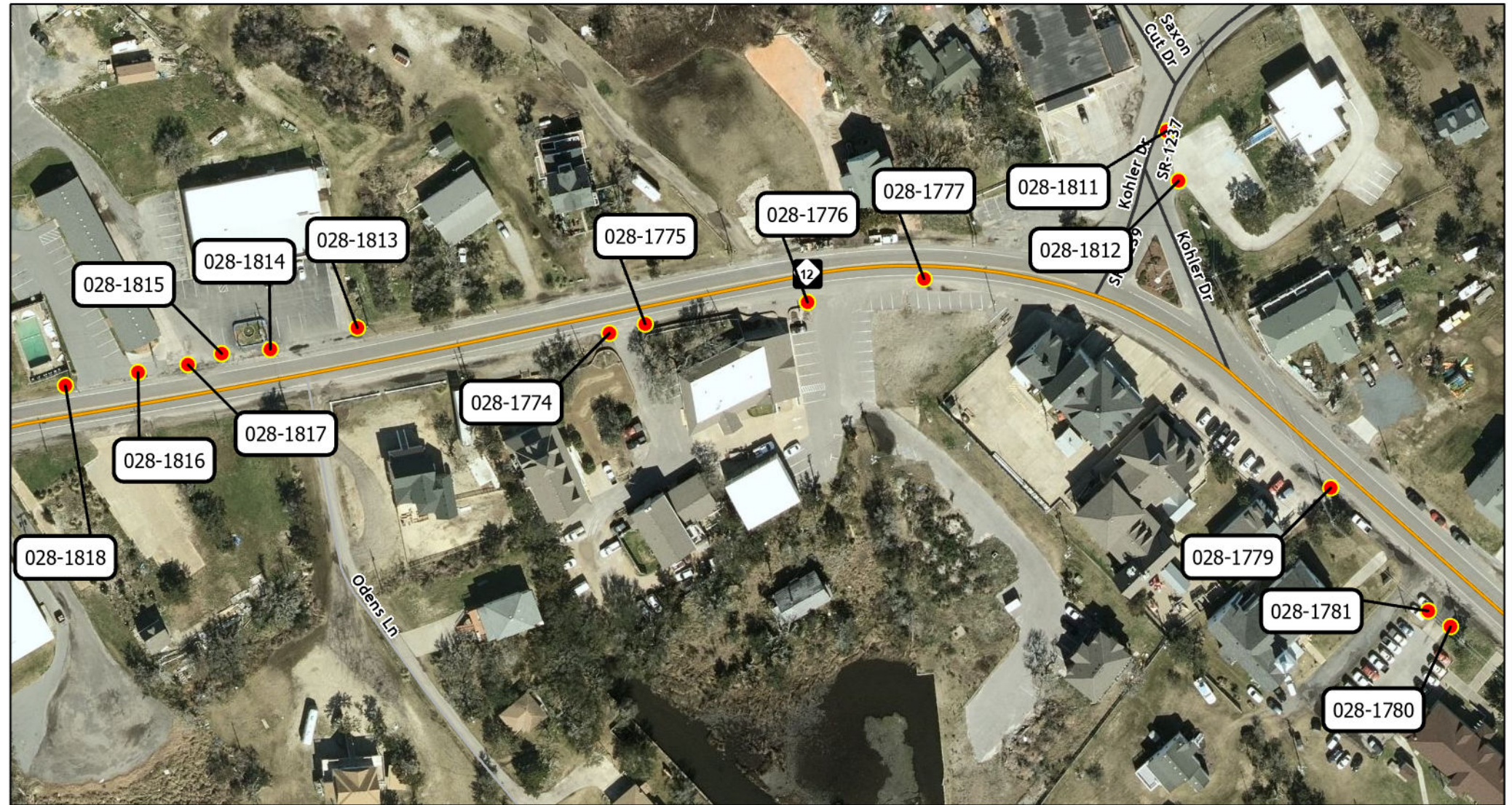
**DARE**

*TYPE OF WORK: CONCRETE CURB RAMP IMPROVEMENTS*

\*SURFACE MOUNTED DETECTABLE WARNINGS  
SHALL NOT BE PERMITTED ON THIS PROJECT

STATE	STATE PROJECT REFERENCE NUMBER	SHEET NO.
NC	BO-2401A	12
STATE PROJECT NUMBER		DESCRIPTION
50930.3.3		P.E., CONST.

Ramp ID	Proposed Ramp Type
028-1774	Retrofit Existing Ramp
028-1775	Retrofit Existing Ramp
028-1776	Retrofit Existing Ramp
028-1777	Retrofit Existing Ramp
028-1779	Retrofit Existing Ramp
028-1780	Type 1 Modified
028-1781	Retrofit Existing Ramp
028-1811	Type 1
028-1812	Retrofit Existing Ramp
028-1813	Retrofit Existing Ramp
028-1814	Retrofit Existing Ramp
028-1815	Retrofit Existing Ramp
028-1816	Type 1 Modified
028-1817	Type 1 Modified
028-1818	Type 1 Modified



Prepared in the Office of:  
**Johnson, Mirmiran and Thompson, Inc.**  
4700 Falls of Neuse Rd, Suite 100, Raleigh, NC, 27609

**B. N. BRASWELL, PE**  
DIV. PROJ. DEVELOPMENT ENGINEER

**M. S. WINSLOW**  
DIV. CONTRACT ENGINEER

**BARRY HOBBS, PE**  
JMT PROJECT MANAGER

**SAVANNA TAYLOR, EI**  
JMT DESIGN ENGINEER



WBS NO: 50930.3.3

CONTRACT: DA00604

STATE OF NORTH CAROLINA  
DIVISION OF HIGHWAYS

STATE	STATE PROJECT REFERENCE NUMBER	SHEET NO.
NC	BO-2401A	13
STATE PROJECT NUMBER		DESCRIPTION
50930.3.3		P.E., CONST.

\*SURFACE MOUNTED DETECTABLE WARNINGS SHALL NOT BE PERMITTED ON THIS PROJECT

**DARE**

TYPE OF WORK: CONCRETE CURB RAMP IMPROVEMENTS

Ramp ID	Proposed Ramp Type
028-1819	Type 1 Modified
028-1820	Type 1 Modified
028-1821	Type 1 Modified
028-1822	Retrofit Existing Ramp
028-1823	Type 1 Modified
028-1824	Retrofit Existing Ramp
028-1825	Retrofit Existing Ramp
028-1826	Type 1 Modified
028-1827	Retrofit Existing Ramp
028-1828	Retrofit Existing Ramp
028-1829	Retrofit Existing Ramp
028-1830	Retrofit Existing Ramp
028-1831	Retrofit Existing Ramp
028-1832	Retrofit Existing Ramp
028-1833	Retrofit Existing Ramp
028-1834	Retrofit Existing Ramp



Prepared in the Office of:  
**Johnson, Mirmiran and Thompson, Inc.**  
4700 Falls of Neuse Rd, Suite 100, Raleigh, NC, 27609

**B. N. BRASWELL, PE**  
DIV. PROJ. DEVELOPMENT ENGINEER

**M. S. WINSLOW**  
DIV. CONTRACT ENGINEER

**BARRY HOBBS, PE**  
JMT PROJECT MANAGER

**SAVANNA TAYLOR, EI**  
JMT DESIGN ENGINEER



WBS NO: 50930.3.3

CONTRACT: DA00604

# STATE OF NORTH CAROLINA DIVISION OF HIGHWAYS

## DARE

*TYPE OF WORK: CONCRETE CURB RAMP IMPROVEMENTS*

\*SURFACE MOUNTED DETECTABLE WARNINGS  
SHALL NOT BE PERMITTED ON THIS PROJECT

STATE	STATE PROJECT REFERENCE NUMBER	SHEET NO.
NC	BO-2401A	14
STATE PROJECT NUMBER		DESCRIPTION
50930.3.3		P.E., CONST.

Ramp ID	Proposed Ramp Type
028-1835	Type 1 Modified
028-1836	Retrofit Existing Ramp



Prepared in the Office of:  
**Johnson, Mirmiran and Thompson, Inc.**  
 4700 Falls of Neuse Rd, Suite 100, Raleigh, NC, 27609

**B. N. BRASWELL, PE**  
 DIV. PROJ. DEVELOPMENT ENGINEER

**M. S. WINSLOW**  
 DIV. CONTRACT ENGINEER

**BARRY HOBBS, PE**  
 JMT PROJECT MANAGER

**SAVANNA TAYLOR, EI**  
 JMT DESIGN ENGINEER



WBS NO: 50930.3.3

CONTRACT: DA00604

STATE OF NORTH CAROLINA  
DIVISION OF HIGHWAYS

**DARE**

TYPE OF WORK: CONCRETE CURB RAMP IMPROVEMENTS

\*SURFACE MOUNTED DETECTABLE WARNINGS  
SHALL NOT BE PERMITTED ON THIS PROJECT

STATE	STATE PROJECT REFERENCE NUMBER	SHEET NO.
NC	BO-2401A	15
STATE PROJECT NUMBER		DESCRIPTION
50930.3.3		P.E., CONST.

Ramp ID	Proposed Ramp Type
028-1767	Type 1 Modified
028-1768	Type 1 Modified
028-1769	Retrofit Existing Ramp
028-1770	Retrofit Existing Ramp
028-1771	Retrofit Existing Ramp
028-1773	Type 1 Modified



Prepared in the Office of:  
**Johnson, Mirmiran and Thompson, Inc.**  
4700 Falls of Neuse Rd, Suite 100, Raleigh, NC, 27609

**B. N. BRASWELL, PE**  
DIV. PROJ. DEVELOPMENT ENGINEER

**M. S. WINSLOW**  
DIV. CONTRACT ENGINEER

**BARRY HOBBS, PE**  
JMT PROJECT MANAGER

**SAVANNA TAYLOR, EI**  
JMT DESIGN ENGINEER



WBS NO: 50930.3.3

CONTRACT: DA00604

STATE OF NORTH CAROLINA  
DIVISION OF HIGHWAYS

**HYDE**

*TYPE OF WORK: CONCRETE CURB RAMP IMPROVEMENTS*

\*SURFACE MOUNTED DETECTABLE WARNINGS  
SHALL NOT BE PERMITTED ON THIS PROJECT

STATE	STATE PROJECT REFERENCE NUMBER	SHEET NO.
NC	BO-2401A	16
STATE PROJECT NUMBER		DESCRIPTION
50930.3.3		P.E., CONST.

Ramp ID	Proposed Ramp Type
048-0023	Type 1 Modified
048-0024	Type 1 Modified
048-0027	Type 1 Modified
048-0028	Type 1 Modified



Prepared in the Office of:  
*Johnson, Mirmiran and Thompson, Inc.*  
4700 Falls of Neuse Rd, Suite 100, Raleigh, NC, 27609

B. N. BRASWELL, PE  
DIV. PROJ. DEVELOPMENT ENGINEER

M. S. WINSLOW  
DIV. CONTRACT ENGINEER

BARRY HOBBS, PE  
JMT PROJECT MANAGER

SAVANNA TAYLOR, EI  
JMT DESIGN ENGINEER





WBS NO: 50930.3.3

CONTRACT: DA00604

STATE OF NORTH CAROLINA  
DIVISION OF HIGHWAYS

**HYDE**

TYPE OF WORK: CONCRETE CURB RAMP IMPROVEMENTS

STATE	STATE PROJECT REFERENCE NUMBER	SHEET NO.
NC	BO-2401A	17
STATE PROJECT NUMBER		DESCRIPTION
50930.3.3		P.E., CONST.

\*SURFACE MOUNTED DETECTABLE WARNINGS SHALL NOT BE PERMITTED ON THIS PROJECT

Ramp ID	Proposed Ramp Type
048-0018	Retrofit Existing Ramp
048-0019	Type 1A
048-0020	Retrofit Existing Ramp
048-0021	Retrofit Existing Ramp
048-0022	Retrofit Existing Ramp
048-0030	Type 1A



Prepared in the Office of:  
*Johnson, Mirmiran and Thompson, Inc.*  
4700 Falls of Neuse Rd, Suite 100, Raleigh, NC, 27609

B. N. BRASWELL, PE  
DIV. PROJ. DEVELOPMENT ENGINEER

M. S. WINSLOW  
DIV. CONTRACT ENGINEER

BARRY HOBBS, PE  
JMT PROJECT MANAGER

SAVANNA TAYLOR, EI  
JMT DESIGN ENGINEER



WBS NO: 50930.3.3

CONTRACT: DA00604

STATE OF NORTH CAROLINA  
DIVISION OF HIGHWAYS

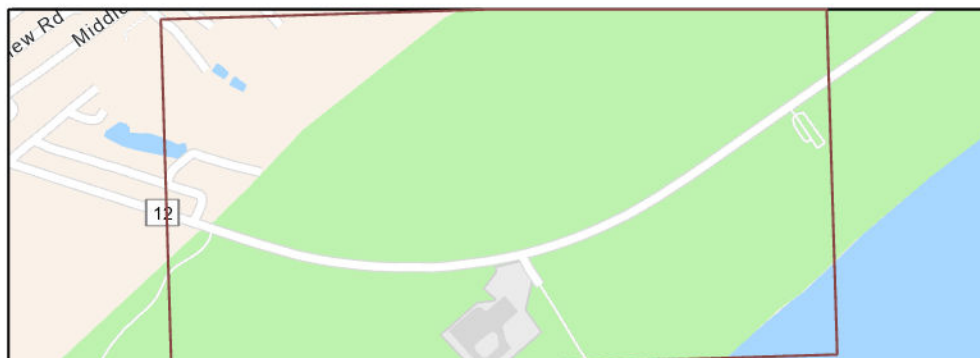
**HYDE**

TYPE OF WORK: CONCRETE CURB RAMP IMPROVEMENTS

STATE	STATE PROJECT REFERENCE NUMBER	SHEET NO.
NC	BO-2401A	18
STATE PROJECT NUMBER		DESCRIPTION
50930.3.3		P.E., CONST.

\*SURFACE MOUNTED DETECTABLE WARNINGS SHALL NOT BE PERMITTED ON THIS PROJECT

Ramp ID	Proposed Ramp Type
048-0011	Retrofit Existing Ramp
048-0012	Retrofit Existing Ramp
048-0013	Retrofit Existing Ramp
048-0014	Retrofit Existing Ramp
048-0015	Retrofit Existing Ramp
048-0016	Retrofit Existing Ramp
048-0017	Retrofit Existing Ramp
048-0029	Retrofit Existing Ramp



Prepared in the Office of:  
**Johnson, Mirmiran and Thompson, Inc.**  
4700 Falls of Neuse Rd, Suite 100, Raleigh, NC, 27609

**B. N. BRASWELL, PE**  
DIV. PROJ. DEVELOPMENT ENGINEER

**M. S. WINSLOW**  
DIV. CONTRACT ENGINEER

**BARRY HOBBS, PE**  
JMT PROJECT MANAGER

**SAVANNA TAYLOR, EI**  
JMT DESIGN ENGINEER



WBS NO: 50930.3.3

CONTRACT: DA00604

STATE OF NORTH CAROLINA  
DIVISION OF HIGHWAYS

**HYDE**

TYPE OF WORK: CONCRETE CURB RAMP IMPROVEMENTS

STATE	STATE PROJECT REFERENCE NUMBER	SHEET NO.
NC	BO-2401A	19
STATE PROJECT NUMBER		DESCRIPTION
50930.3.3		P.E., CONST.

\*SURFACE MOUNTED DETECTABLE WARNINGS SHALL NOT BE PERMITTED ON THIS PROJECT

Ramp ID	Proposed Ramp Type
048-0031	Remove Ramp
048-0032	Retrofit Existing Ramp
048-0033	Remove Ramp
048-0035	Retrofit Existing Ramp
048-0036	Retrofit Existing Ramp
048-0037	Type 1A
048-0039	Type 1 Modified
048-0040	Type 1 Modified
048-0041	Type 1 Modified



Prepared in the Office of:  
**Johnson, Mirmiran and Thompson, Inc.**  
4700 Falls of Neuse Rd, Suite 100, Raleigh, NC, 27609

**B. N. BRASWELL, PE**  
DIV. PROJ. DEVELOPMENT ENGINEER

**M. S. WINSLOW**  
DIV. CONTRACT ENGINEER

**BARRY HOBBS, PE**  
JMT PROJECT MANAGER

**SAVANNA TAYLOR, EI**  
JMT DESIGN ENGINEER



Ramp ID	Sheet No	County	Municipality	Route	Street Name	Crossing Feature	Proposed Ramp Type	Total Length of Warning Pads	4" Concrete Sidewalk (SY)	2'-6" Concrete Curb & Gutter Quantity (LF)	Remove & Replace Conc. Curb. Ramps (EA)	Drainage Pipe Extensions	Relocate Existing Sign (EA)	24" Thermoplastic Pavement Markings Lines (LF)
028-0898	9	Dare	Buxton	SR-1232	Buxton Back Rd	Commercial Driveway	Type 1 Modified	60"	5		1			
028-0901	9	Dare	Buxton	SR-1232	Buxton Back Rd	Commercial Driveway	Retrofit Existing Ramp	60"						
028-0902	9	Dare	Buxton	SR-1232	Buxton Back Rd	Commercial Driveway	Retrofit Existing Ramp	60"						
028-0903	9	Dare	Buxton	SR-1232	Buxton Back Rd	Commercial Driveway	Type 1 Modified	60"	5					
028-0904	9	Dare	Buxton	SR-1232	Buxton Back Rd	Commercial Driveway	Type 1 Modified	60"	5		1			
028-0906	8	Dare	Buxton	SR-1232	Buxton Back Rd	Commercial Driveway	Retrofit Existing Ramp	60"						
028-0907	8	Dare	Buxton	SR-1232	Buxton Back Rd	Commercial Driveway	Retrofit Existing Ramp	60"						
028-0908	8	Dare	Buxton	SR-1232	Buxton Back Rd	Commercial Driveway	Retrofit Existing Ramp	60"						
028-0909	8	Dare	Buxton	SR-1232	Buxton Back Rd	Commercial Driveway	Retrofit Existing Ramp	60"						
028-0910	8	Dare	Buxton	SR-1232	Buxton Back Rd	Commercial Driveway	Commercial Driveway	60"						
028-0911	8	Dare	Buxton	SR-1232	Buxton Back Rd	Commercial Driveway	Retrofit Existing Ramp	60"						
028-0912	8	Dare	Buxton	SR-1232	Buxton Back Rd	Commercial Driveway	Retrofit Existing Ramp	60"	3					
028-0913	8	Dare	Buxton	SR-1232	Buxton Back Rd	Commercial Driveway	Retrofit Existing Ramp	60"						
028-0914	8	Dare	Buxton	SR-1232	Buxton Back Rd	Commercial Driveway	Commercial Driveway	60"						
028-0915	8	Dare	Buxton	SR-1232	Buxton Back Rd	Commercial Driveway	Retrofit Existing Ramp	60"						
028-0916	8	Dare	Buxton	NC-12		Commercial Driveway	Type 1 Modified	48"	5		1			
028-0917	8	Dare	Buxton	NC-12		Commercial Driveway	Type 1 Modified	60"	5		1			
028-0918	8	Dare	Buxton	NC-12		Commercial Driveway	Retrofit Existing Ramp	60"						
028-0919	8	Dare	Buxton	NC-12		Commercial Driveway	Retrofit Existing Ramp	48"						
028-0920	8	Dare	Buxton	NC-12		Commercial Driveway	Retrofit Existing Ramp	60"						
028-0921	8	Dare	Buxton	NC-12		Other	Retrofit Existing Ramp	60"						
028-0922	8	Dare	Buxton	NC-12		Other	Retrofit Existing Ramp	60"						
028-1097	3	Dare	Salvo	NC-12		State Maintained Route	Type 1 Modified	48"					1	
028-1098	2	Dare	Salvo	NC-12		State Maintained Route	Type 1 Modified	48"				1	1	
028-1104	2	Dare	Salvo	NC-12		State Maintained Route	Type 1 Modified	48"	6		1	1	1	60
028-1105	2	Dare	Salvo	NC-12		State Maintained Route	Type 1 Modified	48"					1	60
028-1158	1	Dare	Rodanthe	NC-12		Commercial Driveway	Retrofit Existing Ramp	60"						
028-1159	1	Dare	Rodanthe	NC-12		Commercial Driveway	Type 1 Modified	60"			1			
028-1160	1	Dare	Rodanthe	NC-12		Commercial Driveway	Type 1 Modified	60"	5		1			
028-1161	1	Dare	Rodanthe	NC-12		Commercial Driveway	Retrofit Existing Ramp	60"						
028-1162	1	Dare	Rodanthe	NC-12		Commercial Driveway	Retrofit Existing Ramp	60"						
028-1163	1	Dare	Rodanthe	NC-12		Commercial Driveway	Retrofit Existing Ramp	60"						
028-1164	7	Dare	Rodanthe	NC-12		Commercial Driveway	Type 1 Modified	60"	7		1			
028-1165	7	Dare	Rodanthe	NC-12		Commercial Driveway	Type 1 Modified	60"	5		1			
028-1167	7	Dare	Rodanthe	NC-12		State Maintained Route	Type 1 Modified	48"						
028-1168	7	Dare	Rodanthe	NC-12		Commercial Driveway	Retrofit Existing Ramp	60"						
028-1169	7	Dare	Rodanthe	NC-12		Commercial Driveway	Commercial Driveway	60"						
028-1170	7	Dare	Rodanthe	NC-12		Commercial Driveway	Retrofit Existing Ramp	60"						
028-1171	7	Dare	Rodanthe	NC-12		Commercial Driveway	Retrofit Existing Ramp	60"						
028-1172	7	Dare	Rodanthe	NC-12		Commercial Driveway	Retrofit Existing Ramp	60"						
028-1173	7	Dare	Rodanthe	NC-12		Commercial Driveway	Retrofit Existing Ramp	60"						
028-1174	7	Dare	Rodanthe	NC-12		Commercial Driveway	Type 1 Modified	60"	5		1			
028-1175	7	Dare	Rodanthe	NC-12		Commercial Driveway	Type 1 Modified	60"	5		1			
028-1176	6	Dare	Rodanthe	NC-12		Commercial Driveway	Retrofit Existing Ramp	60"						
028-1177	6	Dare	Rodanthe	NC-12		Commercial Driveway	Commercial Driveway	60"						
028-1179	6	Dare	Rodanthe	NC-12		State Maintained Route	Type 1 Modified	48"				1	1	
028-1180	6	Dare	Rodanthe	NC-12		Commercial Driveway	Retrofit Existing Ramp	60"						
028-1181	6	Dare	Rodanthe	NC-12		Commercial Driveway	Type 1 Modified	60"	5		1			
028-1182	6	Dare	Rodanthe	NC-12		Commercial Driveway	Retrofit Existing Ramp	60"						
028-1183	6	Dare	Rodanthe	NC-12		Commercial Driveway	Commercial Driveway	60"						
028-1184	6	Dare	Rodanthe	NC-12		Commercial Driveway	Retrofit Existing Ramp	60"						
028-1185	6	Dare	Rodanthe	NC-12		Commercial Driveway	Retrofit Existing Ramp	60"						
028-1186	6	Dare	Rodanthe	NC-12		Commercial Driveway	Retrofit Existing Ramp	60"						
028-1187	6	Dare	Rodanthe	NC-12		Commercial Driveway	Commercial Driveway	60"						
028-1188	5	Dare	Rodanthe	NC-12		Commercial Driveway	Retrofit Existing Ramp	60"						
028-1189	5	Dare	Rodanthe	NC-12		Commercial Driveway	Retrofit Existing Ramp	60"						
028-1190	5	Dare	Rodanthe	NC-12		Commercial Driveway	Retrofit Existing Ramp	60"						
028-1191	5	Dare	Rodanthe	NC-12		Commercial Driveway	Retrofit Existing Ramp	60"						
028-1192	5	Dare	Rodanthe	NC-12		Commercial Driveway	Commercial Driveway	60"						
028-1193	5	Dare	Rodanthe	NC-12		Commercial Driveway	Retrofit Existing Ramp	60"						
028-1716	6	Dare	Rodanthe	NC-12		Commercial Driveway	Retrofit Existing Ramp	60"						
028-1717	7	Dare	Rodanthe	NC-12		Commercial Driveway	Retrofit Existing Ramp	60"						
028-1718	7	Dare	Rodanthe	NC-12		Commercial Driveway	Commercial Driveway	60"						
028-1767	15	Dare	Hatteras	NC-12		Parking Lot	Type 1 Modified	68"	3		1			
028-1768	15	Dare	Hatteras	NC-12		Parking Lot	Type 1 Modified	60"	5		1			
028-1769	15	Dare	Hatteras	NC-12		Parking Lot	Retrofit Existing Ramp	72"						

Ramp ID	Sheet No	County	Municipality	Route	Street Name	Crossing Feature	Proposed Ramp Type	Total Length of Warning Pads	4" Concrete Sidewalk (SY)	2'-6" Concrete Curb & Gutter Quantity (LF)	Remove & Replace Conc. Curb. Ramps (EA)	Drainage Pipe Extensions	Relocate Existing Sign (EA)	24" Thermoplastic Pavement Markings Lines (LF)
028-1770	15	Dare	Hatteras	NC-12		Parking Lot	Retrofit Existing Ramp	72"						
028-1771	15	Dare	Hatteras	NC-12		Parking Lot	Retrofit Existing Ramp	72"						
028-1773	15	Dare	Hatteras	NC-12		Non-State Maintained Route	Type 1 Modified	60"	5		1			
028-1774	12	Dare	Hatteras	NC-12		Commercial Driveway	Retrofit Existing Ramp	60"						
028-1775	12	Dare	Hatteras	NC-12		Commercial Driveway	Retrofit Existing Ramp	60"						
028-1776	12	Dare	Hatteras	NC-12		Commercial Driveway	Retrofit Existing Ramp	60"						
028-1777	12	Dare	Hatteras	NC-12		Commercial Driveway	Retrofit Existing Ramp	60"						
028-1779	12	Dare	Hatteras	NC-12		Commercial Driveway	Retrofit Existing Ramp	60"						
028-1780	12	Dare	Hatteras	NC-12		Commercial Driveway	Type 1 Modified	60"	5		1			
028-1781	12	Dare	Hatteras	NC-12		Commercial Driveway	Retrofit Existing Ramp	60"						
028-1782	11	Dare	Hatteras	NC-12		Commercial Driveway	Retrofit Existing Ramp	60"						
028-1783	11	Dare	Hatteras	NC-12		Commercial Driveway	Type 1 Modified	60"	5		1			
028-1784	11	Dare	Hatteras	NC-12		Commercial Driveway	Type 1 Modified	60"	5		1			
028-1785	11	Dare	Hatteras	NC-12		Commercial Driveway	Retrofit Existing Ramp	60"						
028-1786	11	Dare	Hatteras	NC-12		Commercial Driveway	Retrofit Existing Ramp	60"						
028-1787	11	Dare	Hatteras	NC-12		Commercial Driveway	Type 1 Modified	60"	5		1			
028-1788	11	Dare	Hatteras	NC-12		Commercial Driveway	Type 1 Modified	60"	5		1			
028-1789	11	Dare	Hatteras	NC-12		Commercial Driveway	Type 1 Modified	60"	5		1			
028-1790	11	Dare	Hatteras	NC-12		Non-State Maintained Route	Retrofit Existing Ramp	60"						
028-1791	11	Dare	Hatteras	NC-12		Non-State Maintained Route	Retrofit Existing Ramp	60"						
028-1792	10	Dare	Hatteras	NC-12		Commercial Driveway	Retrofit Existing Ramp	60"						
028-1793	10	Dare	Hatteras	NC-12		Commercial Driveway	Retrofit Existing Ramp	60"						
028-1794	10	Dare	Hatteras	NC-12		Commercial Driveway	Retrofit Existing Ramp	60"						
028-1795	10	Dare	Hatteras	NC-12		Commercial Driveway	Retrofit Existing Ramp	60"						
028-1796	10	Dare	Hatteras	NC-12		Commercial Driveway	Retrofit Existing Ramp	60"						
028-1797	10	Dare	Hatteras	NC-12		Commercial Driveway	Retrofit Existing Ramp	60"						
028-1798	10	Dare	Hatteras	NC-12		Commercial Driveway	Type 1 Modified	60"	5		1			
028-1799	10	Dare	Hatteras	NC-12		Commercial Driveway	Type 1 Modified	60"	5		1			
028-1801	10	Dare	Hatteras	NC-12		Commercial Driveway	Type 1 Modified	60"	5		1			
028-1802	10	Dare	Hatteras	NC-12		Commercial Driveway	Type 1 Modified	60"	5		1			
028-1803	10	Dare	Hatteras	NC-12		Commercial Driveway	Retrofit Existing Ramp	60"						
028-1804	10	Dare	Hatteras	NC-12		Commercial Driveway	Type 1 Modified	60"	5		1			
028-1805	10	Dare	Hatteras	NC-12		Non-State Maintained Route	Retrofit Existing Ramp	60"						
028-1806	10	Dare	Hatteras	NC-12		Non-State Maintained Route	Type 1 Modified	60"	5		1			
028-1807	10	Dare	Hatteras	NC-12		Non-State Maintained Route	Retrofit Existing Ramp	60"						
028-1808	10	Dare	Hatteras	NC-12		Non-State Maintained Route	Retrofit Existing Ramp	60"						
028-1809	10	Dare	Hatteras	NC-12		Commercial Driveway	Retrofit Existing Ramp	60"						
028-1810	10	Dare	Hatteras	NC-12		Commercial Driveway	Retrofit Existing Ramp	60"						
028-1811	12	Dare	Hatteras	SR-1237	Kohler Dr	Commercial Driveway	Type 1	60"	5		1			
028-1812	12	Dare	Hatteras	SR-1237	Kohler Dr	Commercial Driveway	Retrofit Existing Ramp	60"						
028-1813	12	Dare	Hatteras	NC-12		Commercial Driveway	Retrofit Existing Ramp	60"						
028-1814	12	Dare	Hatteras	NC-12		Commercial Driveway	Retrofit Existing Ramp	60"						
028-1815	12	Dare	Hatteras	NC-12		Commercial Driveway	Retrofit Existing Ramp	60"						
028-1816	12	Dare	Hatteras	NC-12		Commercial Driveway	Type 1 Modified	60"	5		1			
028-1817	12	Dare	Hatteras	NC-12		Commercial Driveway	Type 1 Modified	60"	5		1			
028-1818	12	Dare	Hatteras	NC-12		Commercial Driveway	Type 1 Modified	60"	5		1			
028-1819	13	Dare	Hatteras	NC-12		Commercial Driveway	Type 1 Modified	60"	5		1			
028-1820	13	Dare	Hatteras	NC-12		Commercial Driveway	Type 1 Modified	60"	5		1			
028-1821	13	Dare	Hatteras	NC-12		Commercial Driveway	Type 1 Modified	60"	5		1			
028-1822	13	Dare	Hatteras	NC-12		Commercial Driveway	Retrofit Existing Ramp	60"						
028-1823	13	Dare	Hatteras	NC-12		Commercial Driveway	Type 1 Modified	60"	5		1			
028-1824	13	Dare	Hatteras	NC-12		Commercial Driveway	Retrofit Existing Ramp	60"						
028-1825	13	Dare	Hatteras	NC-12		Commercial Driveway	Retrofit Existing Ramp	60"						
028-1826	13	Dare	Hatteras	NC-12		Commercial Driveway	Type 1 Modified	60"	5		1			
028-1827	13	Dare	Hatteras	NC-12		Commercial Driveway	Retrofit Existing Ramp	60"						
028-1828	13	Dare	Hatteras	NC-12		Commercial Driveway	Retrofit Existing Ramp	60"						
028-1829	13	Dare	Hatteras	NC-12		Commercial Driveway	Retrofit Existing Ramp	60"						
028-1830	13	Dare	Hatteras	NC-12		Commercial Driveway	Retrofit Existing Ramp	60"						
028-1831	13	Dare	Hatteras	NC-12		Commercial Driveway	Retrofit Existing Ramp	60"						
028-1832	13	Dare	Hatteras	NC-12		Commercial Driveway	Retrofit Existing Ramp	60"						
028-1833	13	Dare	Hatteras	NC-12		Non-State Maintained Route	Retrofit Existing Ramp	60"						
028-1834	13	Dare	Hatteras	NC-12		Non-State Maintained Route	Retrofit Existing Ramp	60"						
028-1835	14	Dare	Hatteras	NC-12		Commercial Driveway	Type 1 Modified	60"	5		1			
028-1836	14	Dare	Hatteras	NC-12		Commercial Driveway	Retrofit Existing Ramp	60"						
028-1837	9	Dare	Buxton	SR-1232	Buxton Back Rd	Non-State Maintained Route	Retrofit Existing Ramp	60"		8				
028-1838	9	Dare	Buxton	SR-1232	Buxton Back Rd	Other	Type 1 Modified	60"	5		1			

Ramp ID	Sheet No	County	Municipality	Route	Street Name	Crossing Feature	Proposed Ramp Type	Total Length of Warning Pads	4" Concrete Sidewalk (SY)	2'-6" Concrete Curb & Gutter Quantity (LF)	Remove & Replace Conc. Curb. Ramps (EA)	Drainage Pipe Extensions	Relocate Existing Sign (EA)	24" Thermoplastic Pavement Markings Lines (LF)
028-1839	9	Dare	Buxton	SR-1232	Buxton Back Rd	Non-State Maintained Route	Retrofit Existing Ramp	60"						
028-1840	9	Dare	Buxton	SR-1232	Buxton Back Rd	Non-State Maintained Route	Retrofit Existing Ramp	60"						
028-1841	9	Dare	Buxton	SR-1232	Buxton Back Rd	Commercial Driveway	Retrofit Existing Ramp	60"						
028-1846	3	Dare	Salvo	NC-12		Commercial Driveway	Type 1 Modified	60"	5		1			
028-1867	4	Dare	Oregon Inlet		Oregon Inlet Fishing Pier	Parking Lot	Retrofit Existing Ramp	66"						
048-0011	18	Hyde	Ocracoke	NC-12	Irvin Garrish Hwy	Non-State Maintained Route	Retrofit Existing Ramp	96"						
048-0012	18	Hyde	Ocracoke	NC-12	Irvin Garrish Hwy	Non-State Maintained Route	Retrofit Existing Ramp	96"						
048-0013	18	Hyde	Ocracoke	NC-12	Irvin Garrish Hwy	State Maintained Route	Retrofit Existing Ramp	120"						
048-0014	18	Hyde	Ocracoke	NC-12	Irvin Garrish Hwy	Non-State Maintained Route	Retrofit Existing Ramp	120"						
048-0015	18	Hyde	Ocracoke	NC-12	Irvin Garrish Hwy	Non-State Maintained Route	Retrofit Existing Ramp	120"						
048-0016	18	Hyde	Ocracoke	NC-12	Irvin Garrish Hwy	Non-State Maintained Route	Retrofit Existing Ramp	120"						
048-0017	18	Hyde	Ocracoke	NC-12	Irvin Garrish Hwy	Non-State Maintained Route	Retrofit Existing Ramp	120"						
048-0018	17	Hyde	Ocracoke	NC-12	Irvin Garrish Hwy	State Maintained Route	Retrofit Existing Ramp	120"						
048-0019	17	Hyde	Ocracoke	NC-12	Irvin Garrish Hwy	State Maintained Route	Type 1A	48"						
048-0020	17	Hyde	Ocracoke	NC-12	Irvin Garrish Hwy	Non-State Maintained Route	Retrofit Existing Ramp	120"						
048-0021	17	Hyde	Ocracoke	NC-12	Irvin Garrish Hwy	Non-State Maintained Route	Retrofit Existing Ramp	120"						
048-0022	17	Hyde	Ocracoke	NC-12	Irvin Garrish Hwy	Non-State Maintained Route	Retrofit Existing Ramp	120"						
048-0023	16	Hyde	Ocracoke	NC-12	Irvin Garrish Hwy	State Maintained Route	Type 1 Modified	48"						
048-0024	16	Hyde	Ocracoke	NC-12	Irvin Garrish Hwy	State Maintained Route	Type 1 Modified	48"	4					
048-0027	16	Hyde	Ocracoke	NC-12	Irvin Garrish Hwy	Parking Lot	Type 1 Modified	48"	4					
048-0028	16	Hyde	Ocracoke	NC-12	Irvin Garrish Hwy	Parking Lot	Type 1 Modified	48"						
048-0029	18	Hyde	Ocracoke	NC-12	Irvin Garrish Hwy	State Maintained Route	Retrofit Existing Ramp	120"						
048-0030	17	Hyde	Ocracoke	NC-12	Irvin Garrish Hwy	Non-State Maintained Route	Type 1A	48"						
048-0031	19	Hyde	Ocracoke	NC-12	Irvin Garrish Highway Pier	None	Remove Ramp	48"						
048-0032	19	Hyde	Ocracoke	NC-12	Irvin Garrish Highway Pier	Parking Lot	Retrofit Existing Ramp	108"						
048-0033	19	Hyde	Ocracoke	NC-12	Irvin Garrish Highway Pier	Parking Lot	Remove Ramp	48"						
048-0035	19	Hyde	Ocracoke	NC-12	Irvin Garrish Hwy	State Maintained Route	Retrofit Existing Ramp	48"						
048-0036	19	Hyde	Ocracoke	NC-12	Irvin Garrish Hwy	State Maintained Route	Retrofit Existing Ramp	96"						
048-0037	19	Hyde	Ocracoke	NC-12	Irvin Garrish Hwy	State Maintained Route	Type 1A	48"			1			
048-0039	19	Hyde	Ocracoke	NC-12	Pilottown Cir	State Maintained Route	Type 1 Modified	48"			1			
048-0040	19	Hyde	Ocracoke	NC-12	Pilottown Cir	State Maintained Route	Type 1 Modified	48"			1			
048-0041	19	Hyde	Ocracoke	NC-12	Water Plant Rd Boat Ramp	Parking Lot	Type 1 Modified	48"			1			
<b>Total</b>			<b>164</b>						<b>207</b>	<b>8</b>	<b>43</b>	<b>3</b>	<b>5</b>	<b>120</b>

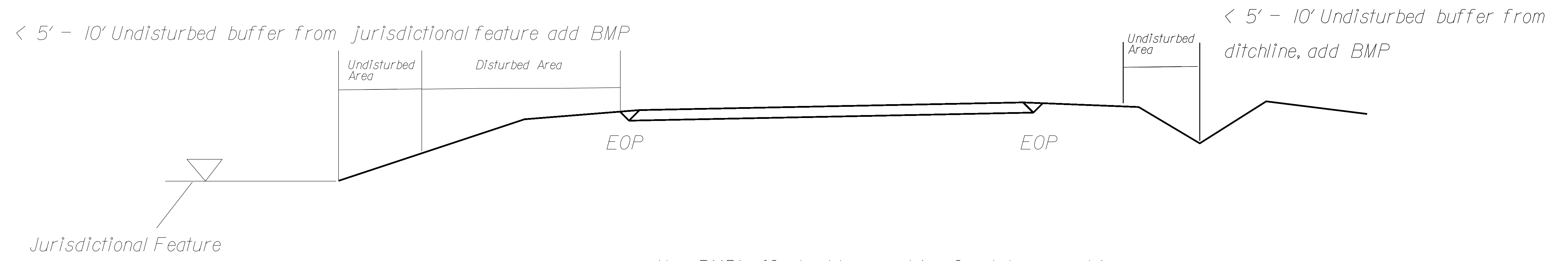
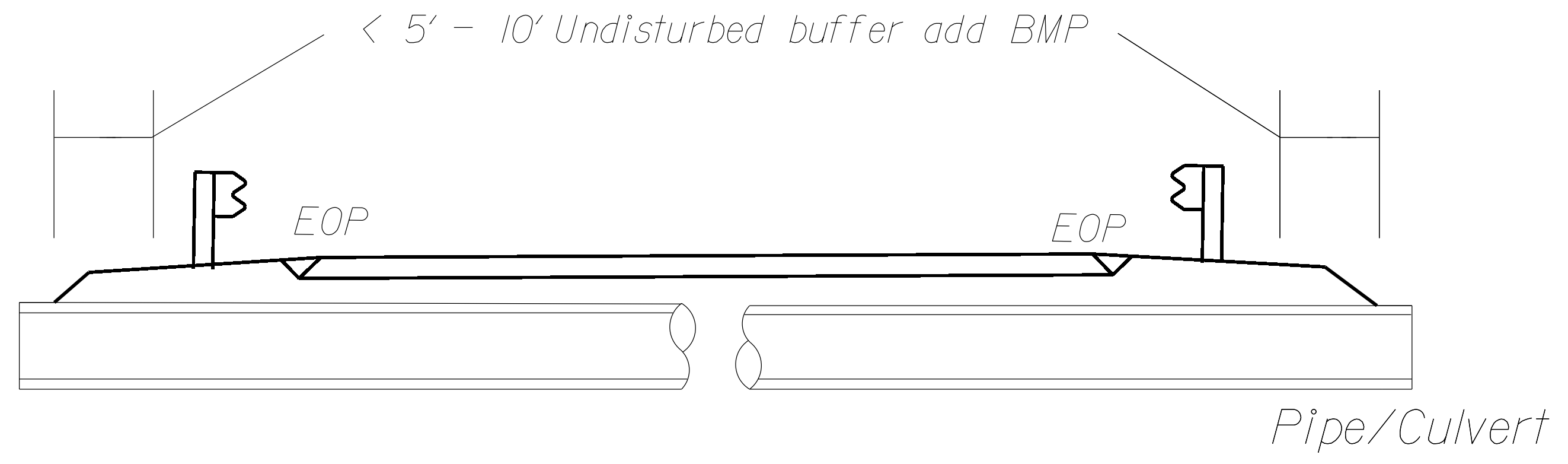
Ramp Type Summary	
Standard Curb Ramp	0
Type 1	1
Type 1 Modified	51
Type 1A	3
Type 1B	0
Type 1D	0
Type 2	0
Type 2A	0
Type 2B	0
Type 2A Modified	0
Type 3	0
Type 3 Modified in Radius	0
Type 4C	0
Type 7	0
Add 4 ft. min. clear space	0

Summary of Quantities	
Concrete Curb Ramps (EA)	12
Remove Curb Ramp (EA)	2
Retrofit Existing Concrete Curb Ramps (EA)	107
Remove & Replace Concrete Curb Ramps (EA)	43
4" Concrete Sidewalk (SY)	207
2'-6" Conc. Curb & Gutter (LF)	8
Drainage Pipe Extensions (EA)	3
Relocate Existing Sign (EA)	5
24" Thermoplastic Pavement Markings Lines (LF)	120

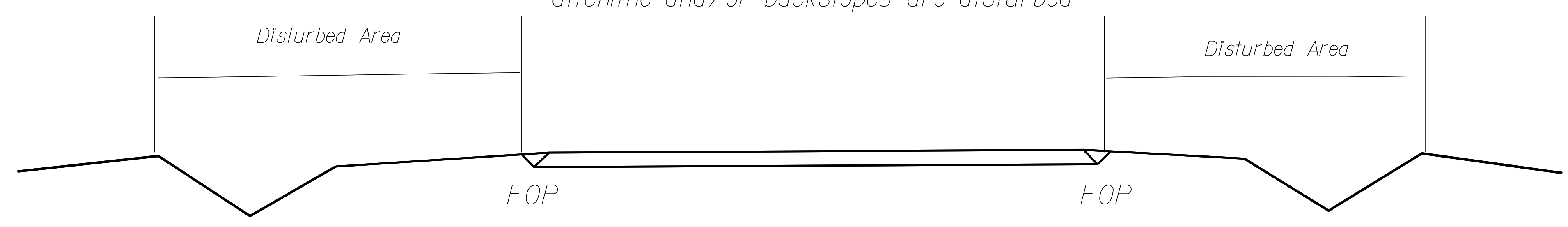
NOTES: Less than 5' - 10' undisturbed buffer from ROW, ditchline, water feature, or drainage inlet, add BMP.

# EROSION CONTROL DETAIL

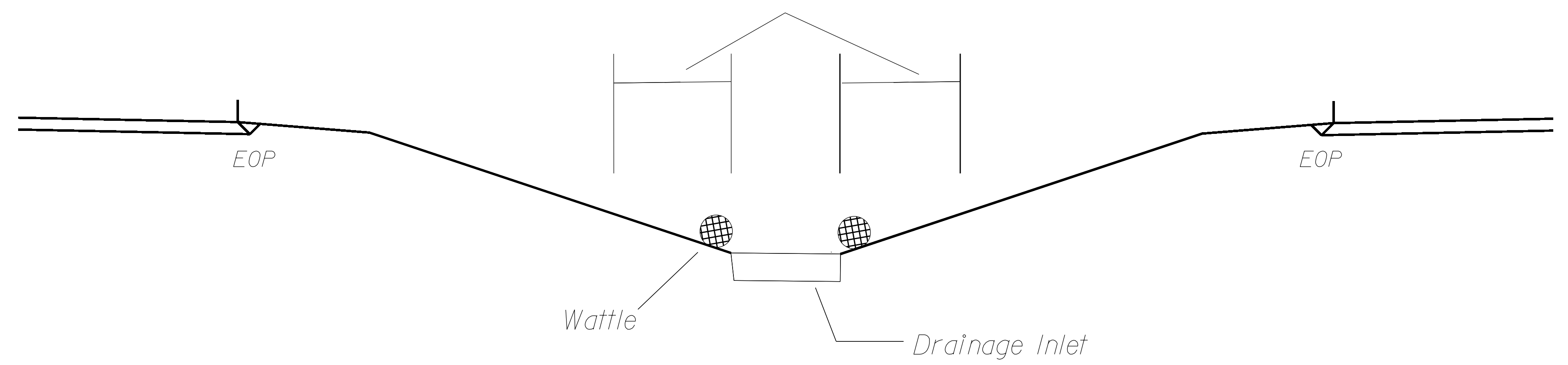
BMP Options: Wattle or Silt Fence



Use BMP's if shoulders and/or frontslopes and/or ditchline and/or backslopes are disturbed

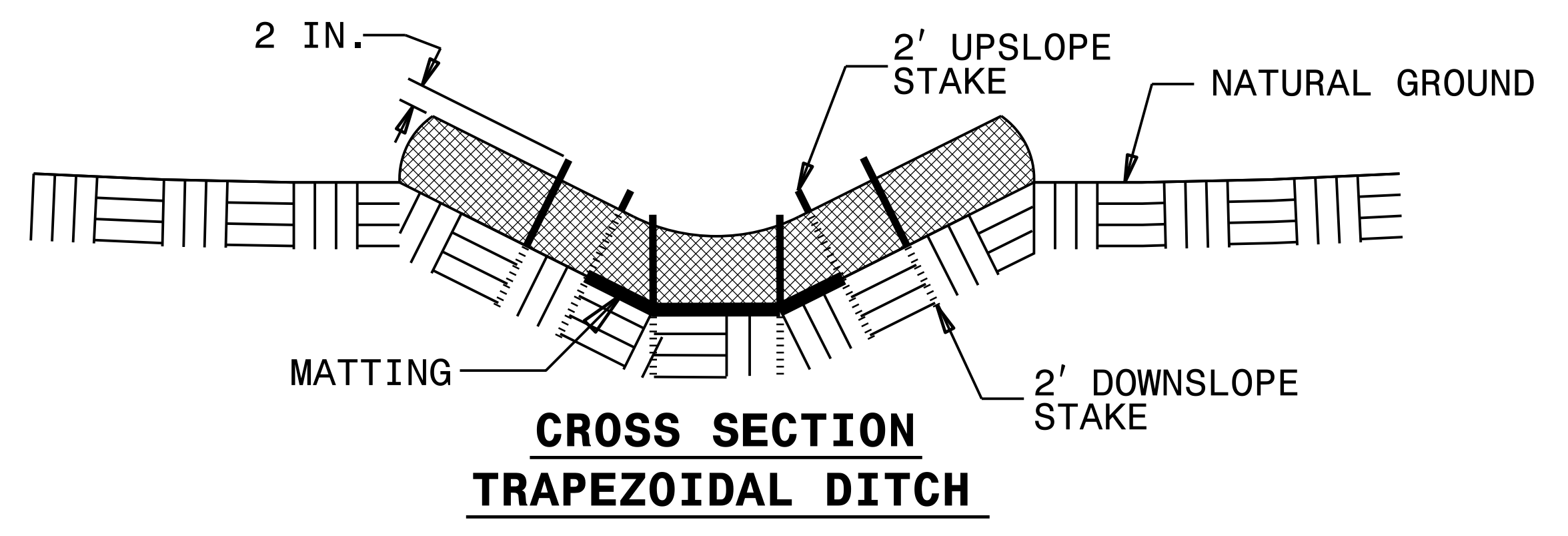
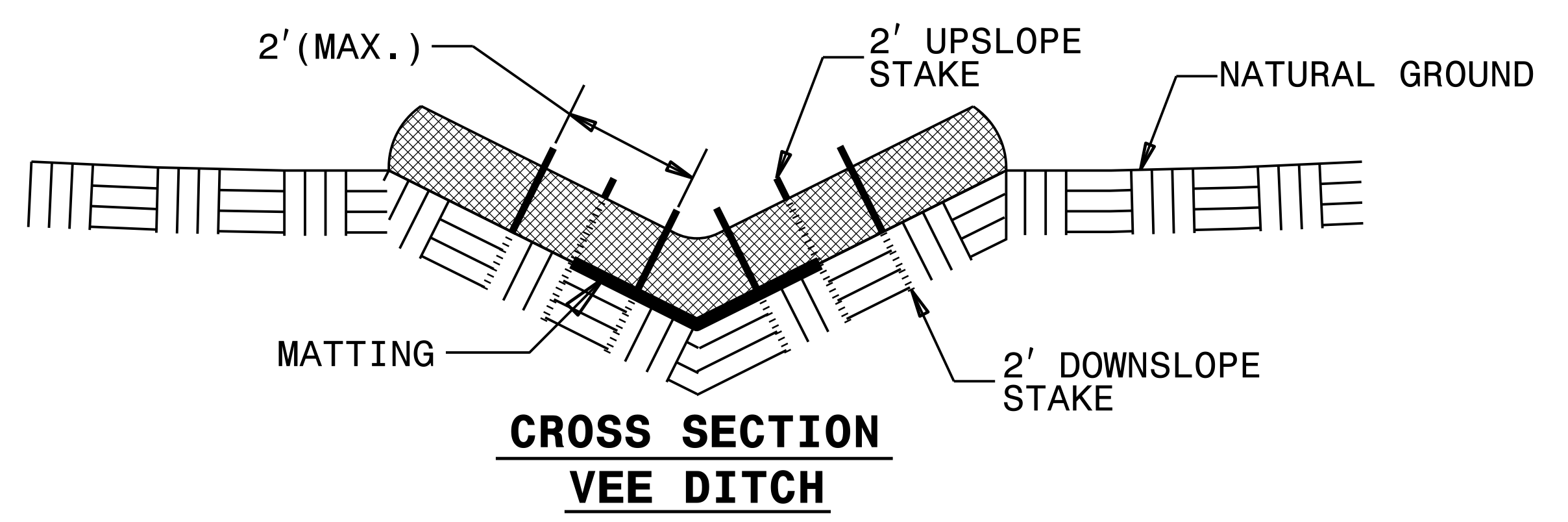
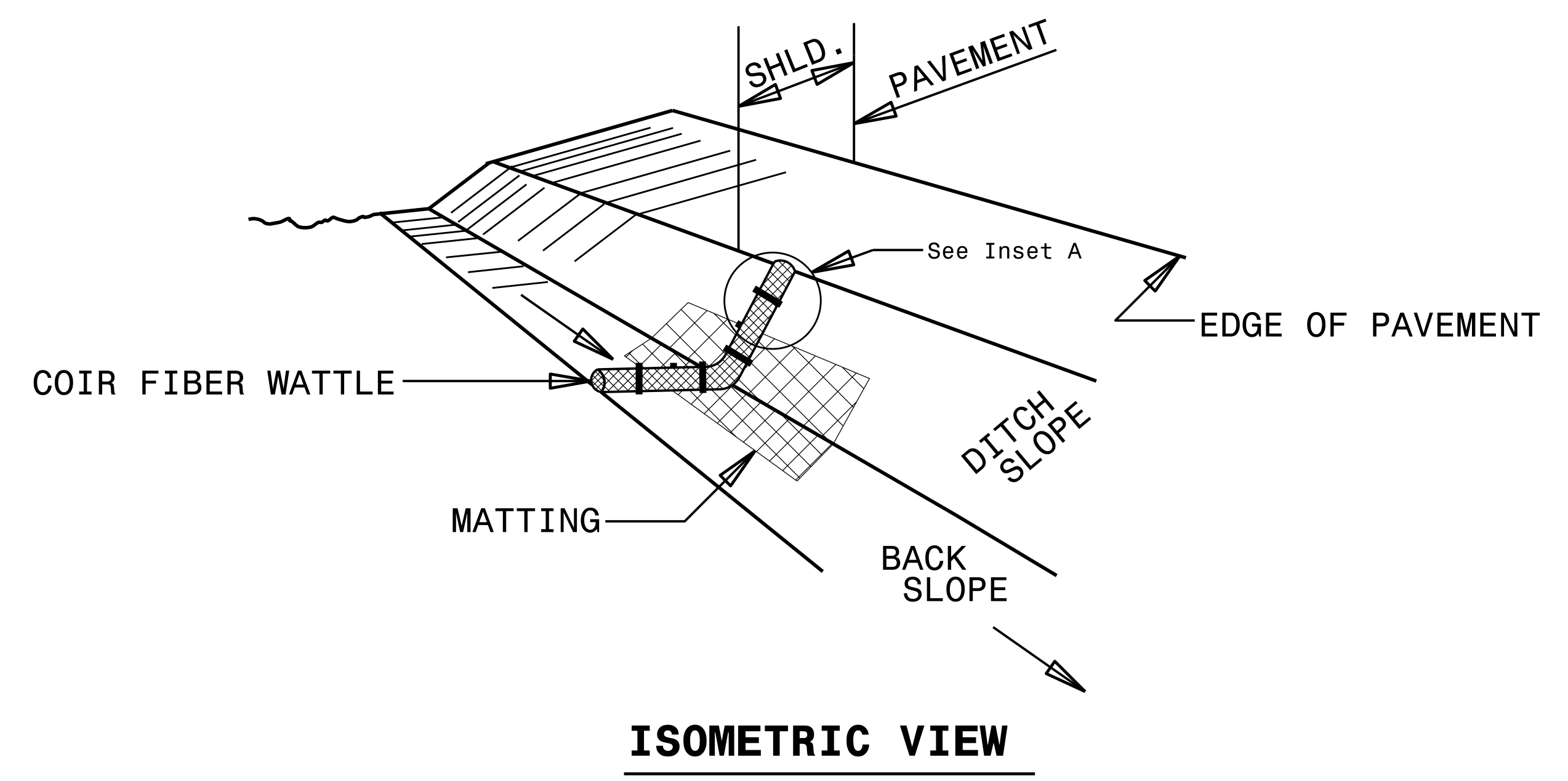


< 5' - 10' Undisturbed buffer from inlet, add wattle



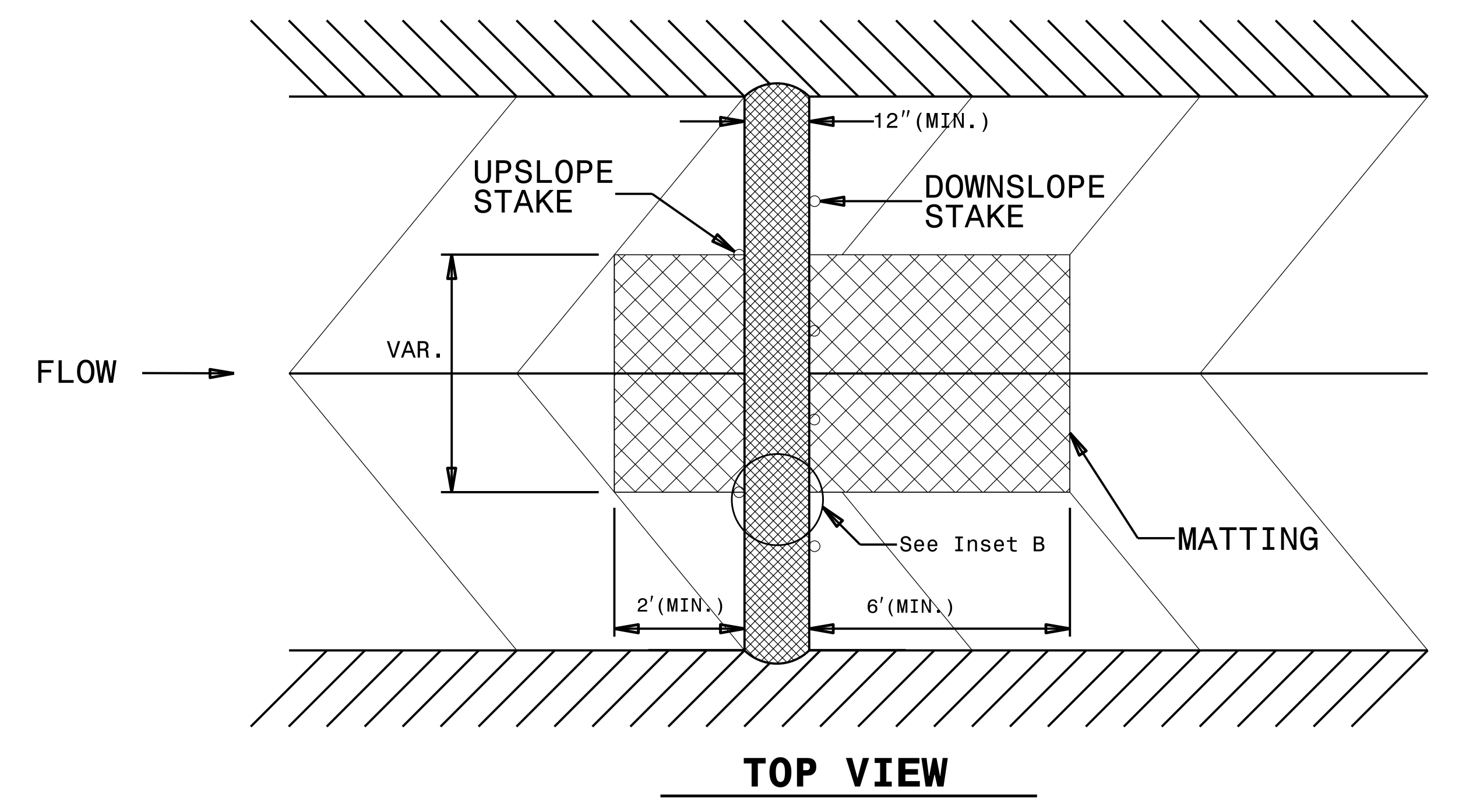
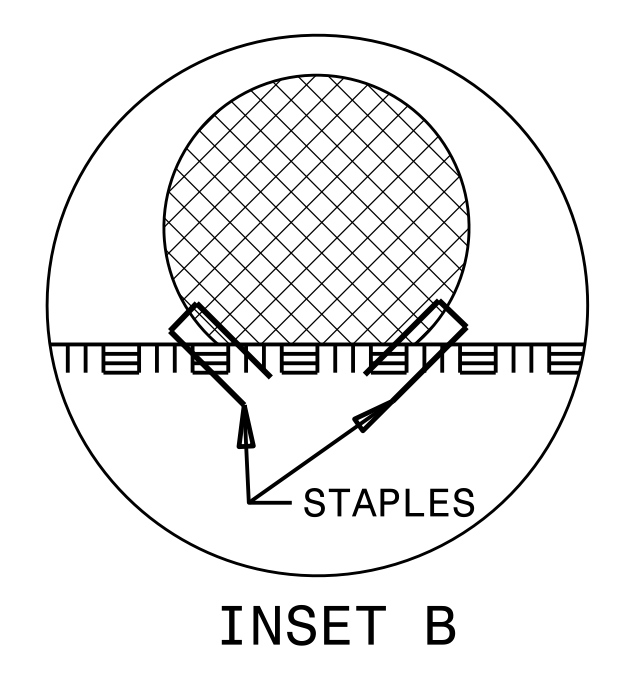
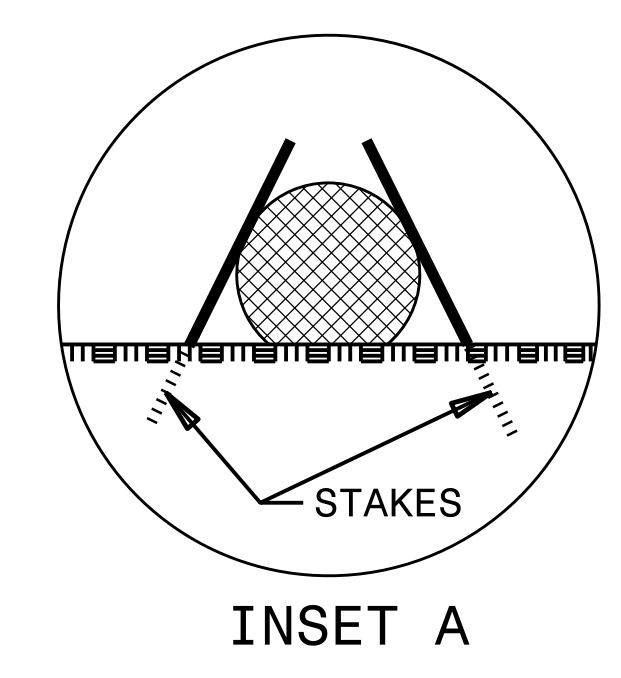
NOT TO SCALE

# COIR FIBER WATTLE DETAIL



**NOTES:**

- USE MINIMUM 12 IN. DIAMETER COIR FIBER (COCONUT FIBER) WATTLE.
- USE 2 FT. WOODEN STAKES WITH A 2 IN. BY 2 IN. NOMINAL CROSS SECTION.
- ONLY INSTALL WATTLE(S) TO A HEIGHT IN DITCH SO FLOW WILL NOT WASH AROUND WATTLE AND SCOUR DITCH SLOPES AND AS DIRECTED.
- INSTALL A MINIMUM OF 2 UPSLOPE STAKES AND 4 DOWNSLOPE STAKES AT AN ANGLE TO WEDGE WATTLE TO BOTTOM OF DITCH.
- PROVIDE STAPLES MADE OF 0.125 IN. DIAMETER STEEL WIRE FORMED INTO A U SHAPE NOT LESS THAN 12" IN LENGTH.
- INSTALL STAPLES APPROXIMATELY EVERY 1 LINEAR FOOT ON BOTH SIDES OF WATTLE AND AT EACH END TO SECURE IT TO THE SOIL.
- INSTALL MATTING IN ACCORDANCE WITH SECTION 1631 OF THE STANDARD SPECIFICATIONS.





DIVISION OF HIGHWAYS  
STATE OF NORTH CAROLINA

---



---

# SOIL STABILIZATION TIMEFRAMES

SITE DESCRIPTION	STABILIZATION TIME	TIMEFRAME EXCEPTIONS
PERIMETER DIKES, SWALES, DITCHES AND SLOPES	7 DAYS	NONE
HIGH QUALITY WATER (HQW) ZONES	7 DAYS	NONE
SLOPES STEEPER THAN 3:1	7 DAYS	IF SLOPES ARE 10' OR LESS IN LENGTH AND ARE NOT STEEPER THAN 2:1, 14 DAYS ARE ALLOWED.
SLOPES 3:1 OR FLATTER	14 DAYS	7 DAYS FOR SLOPES GREATER THAN 50' IN LENGTH.
ALL OTHER AREAS WITH SLOPES FLATTER THAN 4:1	14 DAYS	NONE, EXCEPT FOR PERIMETERS AND HQW ZONES.